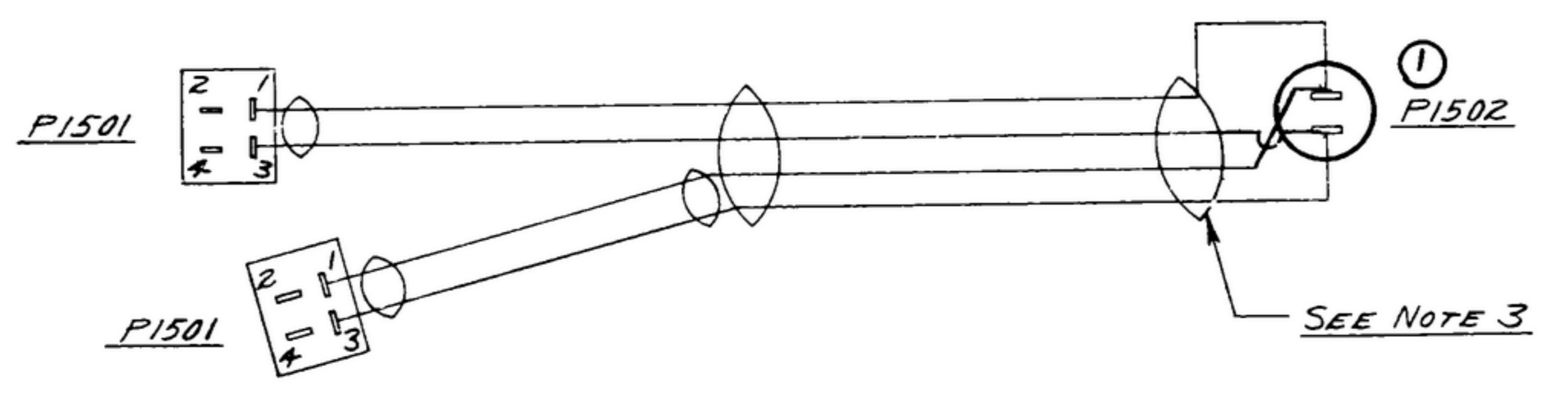
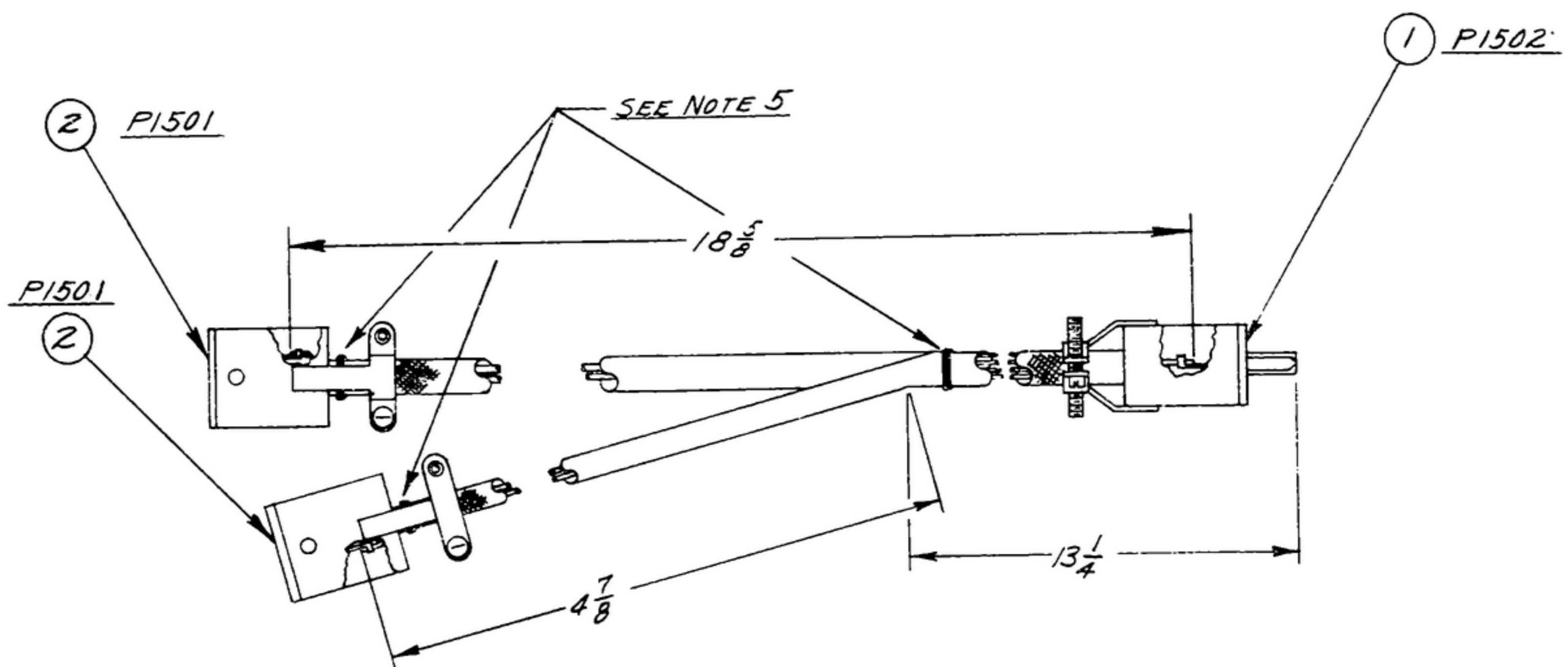


NOTE: THIS DRAWING SHOWS DIMENSIONS, SPECIFICATIONS, OR OTHER DATA ARE USED FOR ANY PURPOSE OTHER THAN IN CONNECTION WITH A SPECIFICALLY HELD PATENT OR OTHER INTELLECTUAL PROPERTY RIGHTS. THE UNITED STATES GOVERNMENT THEREBY HEREBY DISCLAIMS ANY AND ALL RIGHTS IN ANY PATENT OR OTHER INTELLECTUAL PROPERTY RIGHTS THAT MAY BE IN ANY WAY IN CONNECTION WITH THIS DRAWING. THIS DRAWING IS NOT TO BE USED FOR ANY OTHER PURPOSE WITHOUT THE EXPRESS WRITTEN PERMISSION OF THE UNITED STATES GOVERNMENT.

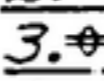
THIS DOCUMENT HAS BEEN PREPARED BY THE CONTRACTOR AND MAY BE SUPERSEDED AND REVISED IN CONNECTION WITH ANY GOVERNMENT PURCHASE OR CONTRACT OPERATION.

* FOR INFORMATION ONLY. CONTRACTOR MAY AT HIS OPTION DEVIATE FROM THESE PROCESS DETAILS.

ORIG ISSUE A		REVISIONS 16 AUG 56	
SYM	DESCRIPTION	DATE	APPROVAL
B1	TERMINATIONS AT P1502 WERE CHANGED	12 AUG 63	GEB JHR



WIRING DIAGRAM

- NOTES:
1. SUPPLIED BY HOWARD B. JONES, CHICAGO, ILL., OR EQUAL.
 2. SUPPLIED BY BENTLEY HARRIS, CONSHOHOKE, PENN., OR EQUAL.
 3.  INDICATES TUBING (3).
 4. SHALL BE SPIR - 7/8 (7)-22 U3.
 5. SHALL BE TIED AS SHOWN, USING (6).

QTY	UNIT	PART NO.	DESCRIPTION	MATL	FINISHED SIZE	QTY	NOTE
6	As Req		-6 CORD TYPE 3 JAN-T-713				5
5	As Req		-5 WIRE JAN-C-18				4
4	As Req		-4 TUBING TYPE 649 #6				3
3	As Req		-3 TUBING TYPE 649 #2				3
2	2		-2 CONNECTOR S-304-CGT/M				1
1	1	SM-C-33302	CONNECTOR P-302-CGT/M				1

UNLESS OTHERWISE SPECIFIED	
DIMENSIONS ARE IN INCHES	
TOLERANCES ON	
FRACTIONS	DECIMALS ANGLES
SC-GL-5715B	
SC-GL-57635	
NEXT ASSY	USED ON
APPLICATION	

COLLINS RADIO CO. CEDAR RAPIDS, IA. (8719-PH-55-23) SIGNAL CORPS REVIEWED XXX APPROVED R.F.O. DATE 12 SEPT 56	CABLE, WARM UP FOR INTERCHANGEABILITY GAGE FOR R-390A/URR & R-392/URR SCALE	DEPARTMENT OF THE ARMY SIGNAL CORPS ENGINEERING LABORATORIES FORT MONMOUTH, NEW JERSEY SM-C-33302
--	---	--

WHEN REFERRING TO THIS DRAWING STATE DRAWING NO., APPLICABLE ISSUE SYMBOL, IF ANY, AND DATE.